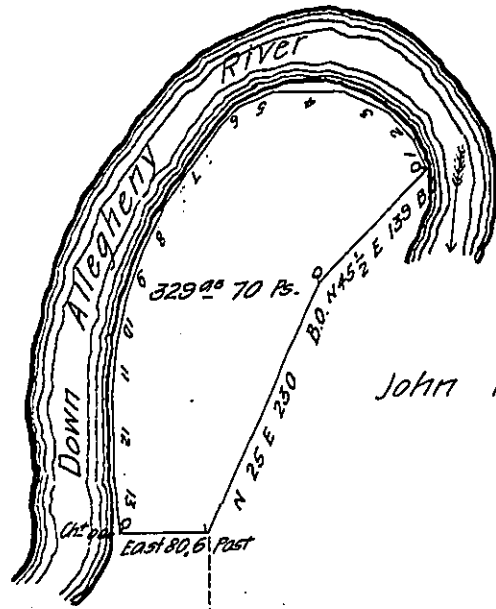


FORM NO 1.

Courses & distances up }
River from Black oak }

- N^o 1. N 25 W 26
- 2 N 41 W 28
- 3 N 64 W 42
- 4 West 70
- 5 S 67 W 32
- 6 S 50 W 28
- 7 S 35 W 86
- 8 S 25 W 44
- 9 S 17 W 38
- 10 S 12 W 44
- 11 S 6 W 50
- 12 South 50.3
- 13 S 5 E 50 to Ches^t oak.



Q-143-63
James Mc Dowell wt.

Draft of a tract of land situate in scrubgrass township Venango
County west of and adjoining the Allegheny river surveyed 15th November 1820
for William Kerns on improvement and settlement

John Irwin D.S.

Jacob Spangler Esq.

Surveyor General of Pa.

IN TESTIMONY that the above is a copy of the original remaining on file in
the Department of Internal Affairs of Pennsylvania, made
conformably to an Act of Assembly approved the 16th day of
February, 1833, I have hereunto set my Hand and caused
the Seal of said Department to be affixed at Harrisburg,
this ninth day of March 1908

Henry Howard
Secretary of Internal Affairs.